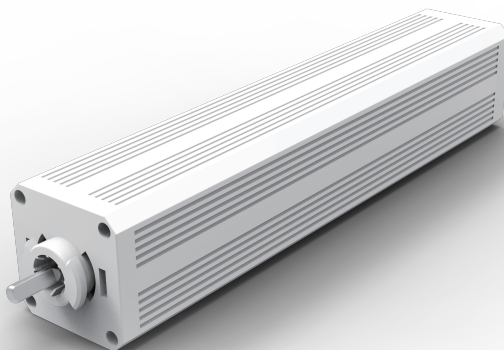




KNX motor operating instruction

BCM400D-KNX



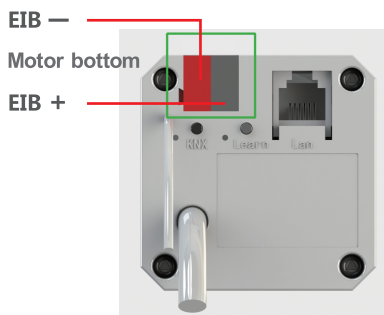
1: Motor Introduction

1) BCM400D-KNX

The motor adopts the KNX bus protocol and can be compatible with and KNX bus system;

Manufacturer member of KNX No.523(M-020B)
Hangzhou Binthen Intelligence Technology Co.,Ltd

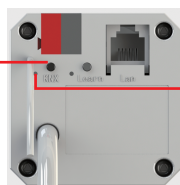
- 2) This motor has passed the international CE certification, KNX international certification, and meets all relevant standards of the KNX Alliance products.
- 3) The BCM300D-KNX motor uses the EIB standard interface, which can Directly connect the bus system, as shown in Figure



3: BCM400D-KNX motor operation guide

- 1) KNX bus system can be directly connected to the motor, EIB terminal red is the positive end of the bus power, gray (black) is the negative end of the bus power (KNX standard voltage is 30V)
- 2) We will provide VD files for programming by professionals after buying this motor.
- 3) The motor needs to enter the configuration mode before programming and configuration. The specific operation is: click the first small hole on the left side of the EIB with a paper clip, at this time the blue indicator light will light, prompting to enter the programming mode, the KNX technician will now be able to configure according to the VD file provided by us, as shown in the figure:

Programming button



Indicator light

4) After the configuration is completed, the motor can perform the actions of stop,open,close,and percentage of opening through the KNX bus system, and can also give feedback of current position,can change the motor running direaction.

